

# Alıya

**İKİ**  
KATTA  
**VİLLA**



## NET ÖLÇÜM ALANLARI Net Measurement Areas

\*\*8+1

RÜZGARLIK	8,38 m <sup>2</sup>
ANTRE	39,53 m <sup>2</sup>
VESTİYER/AYAKKABILIK	3,55 m <sup>2</sup>
KORİDOR	-
**SALON + YAŞAM ODASI	126,61 m <sup>2</sup>
MUTFAK + YAŞAM ODASI	43,10 m <sup>2</sup>
KİLER + merdiven altı depo	12,45 m <sup>2</sup>

<b>EBEVEYN YATAK ODASI 1</b>	36,12 m <sup>2</sup>
BANYO	6,02 m <sup>2</sup>
BALKON	4,43 m <sup>2</sup>
<b>YATAK ODASI 2</b>	18,65 m <sup>2</sup>
BANYO	3,55 m <sup>2</sup>
BALKON	4,05 m <sup>2</sup>
<b>YATAK ODASI 3</b>	23,86 m <sup>2</sup>
BANYO	3,97 m <sup>2</sup>
BALKON	5,35 m <sup>2</sup>
<b>YATAK ODASI 4</b>	22,35 m <sup>2</sup>
BANYO	3,97 m <sup>2</sup>
<b>YATAK ODASI 5</b>	14,73 m <sup>2</sup>
BANYO	3,14 m <sup>2</sup>
<b>H. YATAK ODASI 6</b>	12,56 m <sup>2</sup>
BANYO	2,34 m <sup>2</sup>

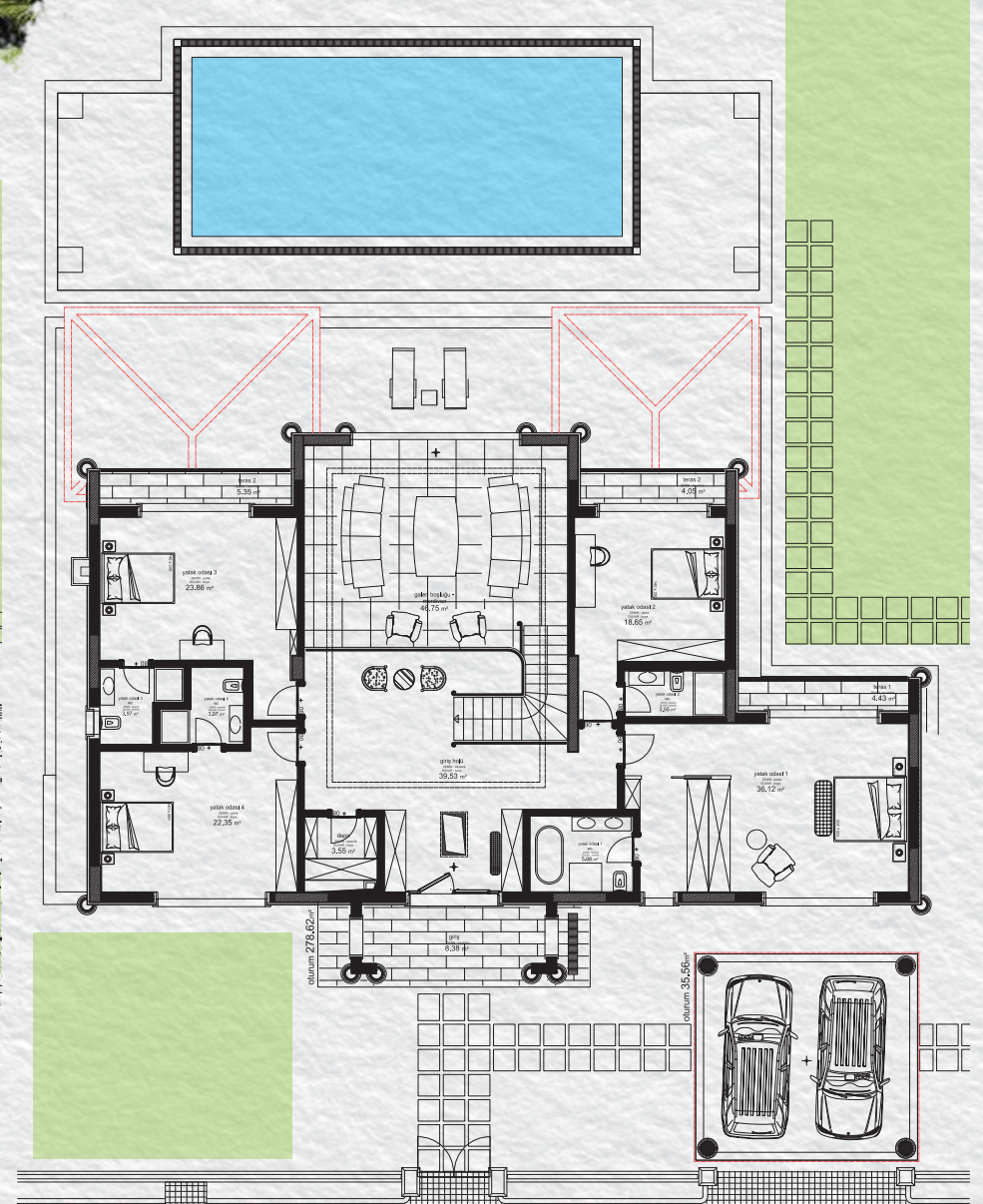
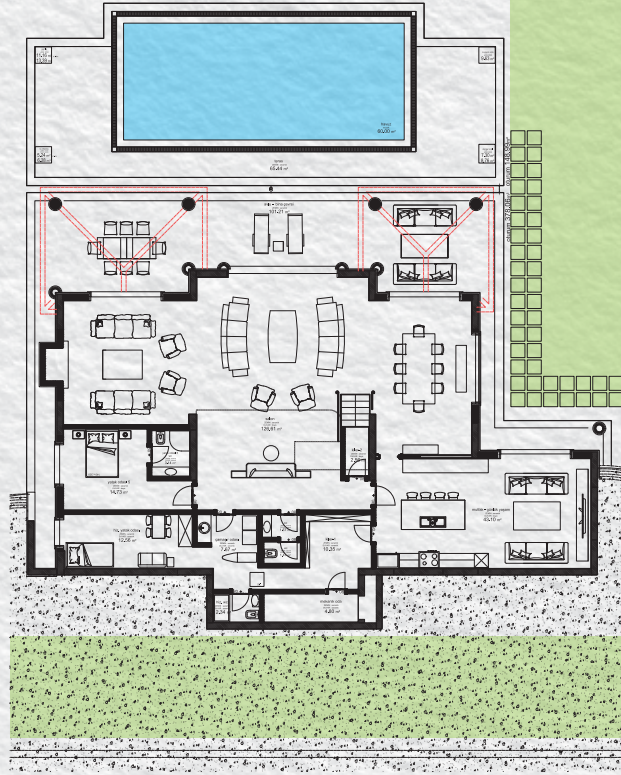
MİSAFİR BANYOSU	2,98 m <sup>2</sup>
ÇAMAŞIR ODASI	7,45 m <sup>2</sup>
TEKNİK ODA	4,80 m <sup>2</sup>
GARAJ	35,56 m <sup>2</sup>
AVLU - VERANDA	103,71 m <sup>2</sup>

VİLLA NET ALANLARI TOPLAMI **553,21 m<sup>2</sup>**

GALERİ BOŞLUĞU	46,75 m <sup>2</sup>
TOPLAM TERAS ALANI	65,44 m <sup>2</sup>
SU DEPOSU ( 22 TON - 26 TON )	23,70 m <sup>2</sup>
HAVUZ MEKANİK ODASI	9,63 m <sup>2</sup>
HAVUZ	60,00 m <sup>2</sup>

NET ÖLÇÜM ALANLAR TOPLAMI **758,73 m<sup>2</sup>**

**BRÜT ALAN** **841,23 m<sup>2</sup>**  
Gross area



\* MUTFAK YAŞAM ODASI DAHİL ODA SAYISINI İFADE EDER  
\*\* MUTFAK VE GÜNLÜK YAŞAM DAHİL ODA SAYISINI İFADE EDER